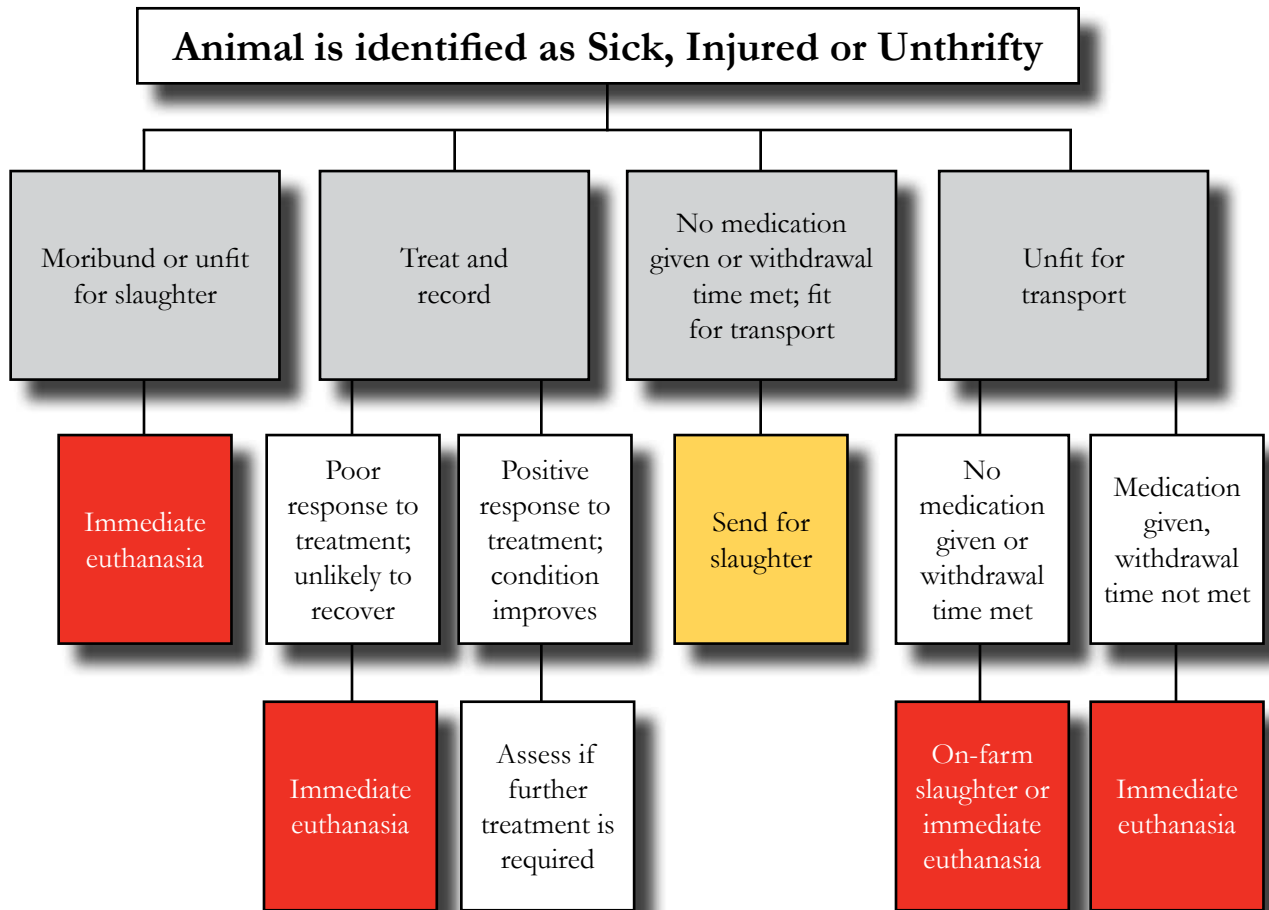




## Example of Decision Tree for Euthanasia



### Examples of criteria for euthanizing sheep

- Weak, unable to stand
- Unable to eat or drink
- Severe injury (e.g. from predator attack)
- Broken leg with exposed bone
- Exposed internal organs
- Moderate to severe lameness
- Rectal or vaginal prolapse (persistent or damaged)
- Severe body weight loss (20% or greater)

Refer to sections 7.0 Euthanasia, 4.4 Sick, Injured or Cull Animals and 6.1.1 Fitness for Transport.